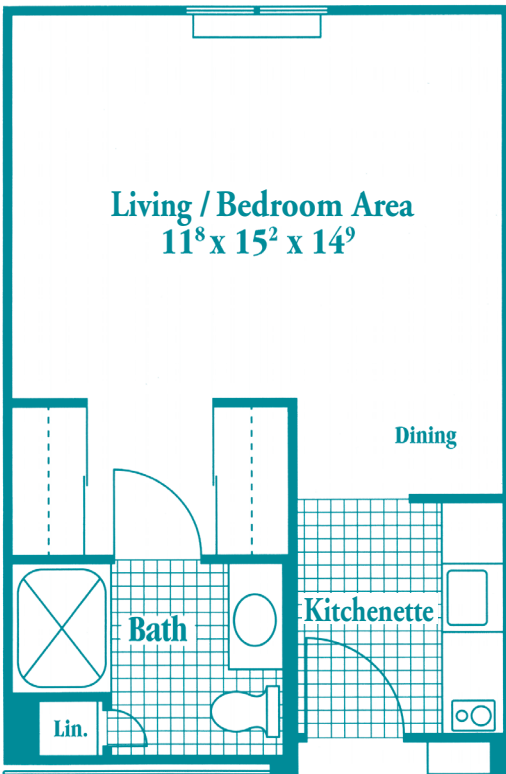


# OakView Personal Care at Springhill

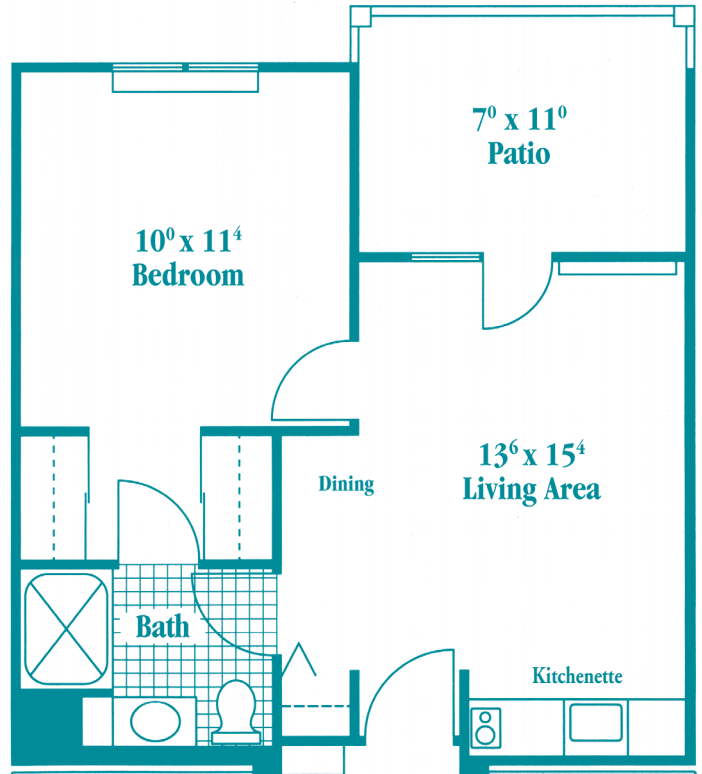
*OakView provides added support for living a pleasurable, engaged life, while giving families peace of mind.*

## The Bayberry



*Room sizes and details subject to some variation.  
Approximate square footage: 352*

## The Chestnut



*Approximate square footage: 436*

# OakView Personal Care at Springhill

## ***Apartment Home Features***

- Wall-to-wall carpet
- Kitchenette
- Patio or balcony in some locations
- Individually controlled heating and air conditioning
- Sprinkler and smoke detection system
- Full bath with walk-in shower

## ***Included Services***

- Complete Dining Plan
- Daily housekeeping
- Weekly laundry
- All interior and exterior maintenance
- All utilities except telephone, cable TV, and internet
- Scheduled transportation
- Assistance in bathing, dressing, and grooming
- Supervision and administration of medication
- Individual and group activities
- Social services support
- Full health care staff and nursing services
- Emergency response system
- 24-hour security
- Priority access to skilled nursing and/or memory support neighborhood

## ***Community Amenities***

- 45 wooded acres with walking paths
- Outdoor gardens and greenhouse
- Full service restaurant
- Casual café and outdoor dining patio
- Private dining room
- Community room for meetings, performances, and lectures
- Library
- Fitness center with Nautilus™ equipment
- Billiard and game rooms
- Computer lab
- Salon
- Guest suites for visitors
- WiFi (designated areas)

## ***Available Services***

- On-site physician
- Springhill at Home (licensed home care)



2323 Edinboro Road, Erie, PA 16509-3492 (814) 860-7042 or (800) 755-6784

[www.SpringhillErie.org](http://www.SpringhillErie.org)

